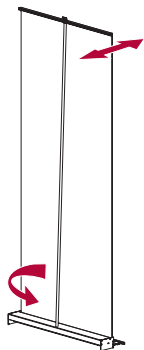


- Hold the aluminium top profile, pull out the graphic panel to its full length and attach it to the support pole using the opening in the top profile



- Following the labelling on the support pole adjust the angle of the graphic panel by turning the bottom part of the pole
- To dismantle follow the above steps in reverse order

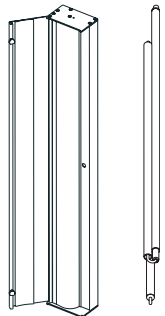


EUROroll III

instruction manual

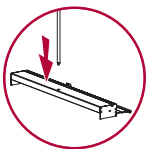


EUROroll III

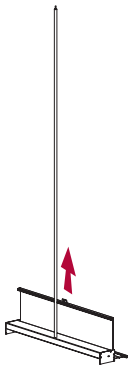


Working process:

- Remove the structure from the packaging
- Open the roll and take out the foldable support pole



- Place the roll onto the floor so that the rubber feet are placed on the floor
- Assemble the foldable support pole
- Following the labelling on the support pole, insert the pole into the roll



- Stand behind the roll
- Using the rubber loop pull out the aluminium top profile from the body of the roll

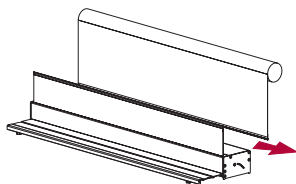


Exchanging the graphic panel:

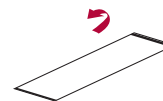
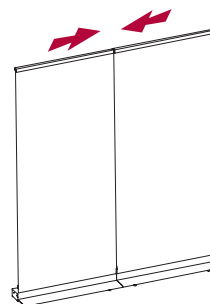
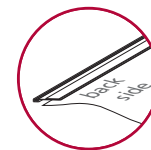
- 2 people are needed to exchange the graphic panel
- Pull out the graphic panel completely - up to the plastic profile of the graphic panel
- As soon as the bottom plastic profile is pulled about 10 cm over the end of the body of the roll the second person should insert the bigger imbus key into the hole in the side part of the roll to lock the winding mechanism



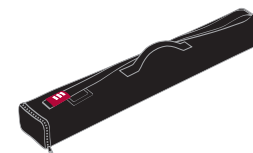
- Standing behind the roll take out the right rubber end of the top profile (left rubber end is fixed - as shown on the labelling)
- Loosen the screw inside the left part of the top profile using the smaller imbus key
- Slide the profile off of the graphic panel while keeping the tension in both sides of the panel



- Roll down the graphic panel
- As soon as it is rolled down slide the graphic panel off the bottom plastic profile
- To insert a new graphic panel follow the above steps in reverse order
- While keeping tension in both sides of the panel the second person should remove the imbus key to unlock the winding mechanism



packaging



Mounting the graphics:

- Fix the plastic profile on the back side of the panel

- Connecting

Notice:

For interior use only!

Max. weight of the graphic panel 450g/m².

Graphic panels can be cleaned using water and detergent; laminated panels can also be cleaned with an alcohol-based cleaner.

Always roll up the graphic panels with the print on the outside!