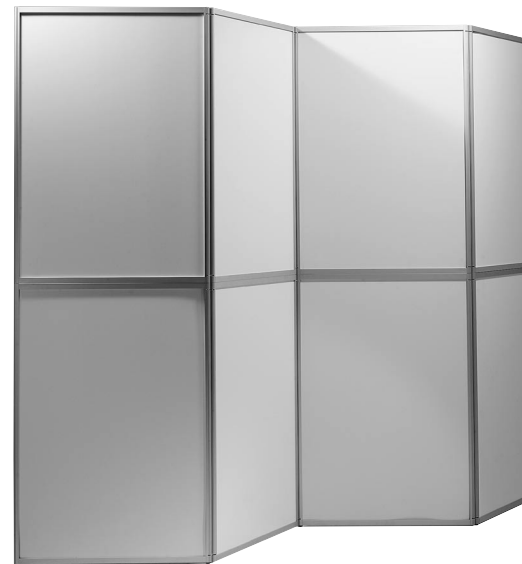




EUROframe

instruction manual



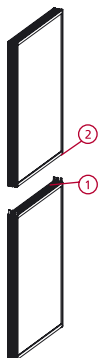
www.eurostand.com

[p]art of perfect presentation

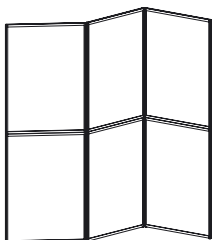
EUROframe



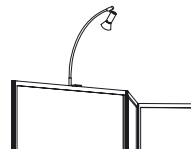
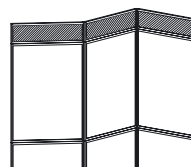
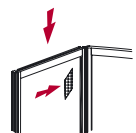
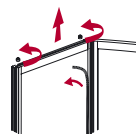
Remove both parts of the structure from the packaging.



Place the folded part no. 1 of the structure on the floor, so that the rubber feet are on the floor. Place part no. 2 onto part no. 1.



You can open the structure into the required shape.



To change the graphic panels please use the attached service set.

Loosen the screws on the horizontal pro-file and exchange the panels. Reconnect the horizontal profile by tightening the two screws and also use the steels tongues to affix the panel in place.

Note 1:

If you wish to use a logo, please attach the logo first to part no. 2 and then follow the above instructions to attach part no. 2 with the logo to part no. 1.

Note 2:

If you wish to use lights, use connector to attach them to the top horizontal profile.

Transport bag for EUROframe.

Notice:
For interior use only!